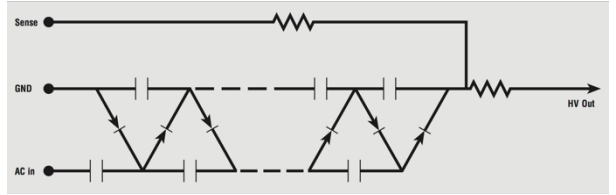


# INQUIRY FORM – MULTIPLIER

Use this form to help provide the needed information for technical sales support with a product request for all standard products, and custom designs. To be used for all high voltage multiplier assemblies.



## GENERAL INFORMATION

Company Name: \_\_\_\_\_  
Individual Name: \_\_\_\_\_  
Email Address: \_\_\_\_\_  
Phone Number: \_\_\_\_\_

Request Date: \_\_\_\_\_  
Response Required Date: \_\_\_\_\_  
Build Location (City & Country): \_\_\_\_\_  
Final Application: \_\_\_\_\_

## DESIGN REQUIREMENTS

### Basic Input Characteristics:

Input Voltage: \_\_\_\_\_ (V)  
Input Voltage Type:  Peak to Peak /  Peak /  RMS  
Input Waveform:  Sine /  Square  
 Other \_\_\_\_\_  
Waveform Type:  Symmetric /  Positive /  Negative  
 Other \_\_\_\_\_  
Input Frequency or Repetition Rate: \_\_\_\_\_ (Hz)  
Maximum Operating Temperature: \_\_\_\_\_ (°C)

### Basic Output Characteristics:

Load Type:  Resistive /  Capacitive  
Ripple: \_\_\_\_\_ (%)  
Ripple Max: \_\_\_\_\_ (%) at \_\_\_\_\_ (mA Output)  
Max Voltage Output at Full Load: \_\_\_\_\_ (V)  
Max Output Current: \_\_\_\_\_ (mA)

### Output Options:

Voltage Tap: \_\_\_\_\_ (V) at \_\_\_\_\_ (mA Load)  
Bleed Resistor: \_\_\_\_\_ (MΩ)  
Series Output Resistor: \_\_\_\_\_ (kΩ)

### Mechanical & Package Requirements:

Maximum Length: \_\_\_\_\_ (in. / cm)  
Maximum Width: \_\_\_\_\_ (in. / cm)  
Maximum Height: \_\_\_\_\_ (in. / cm)  
Mounting Dimensions / Type: \_\_\_\_\_

Terminals / Connection Types\*: \_\_\_\_\_

### Other Requirements:

Full Encapsulation Required:  Yes /  No

(\*Include Wire AWG and Length)

## NOTES: